

Button Switch $\Phi 22$

Quality as the root · Service as the base



YJ-LA16W Series Ultrathin Surface Button Switch



GENERAL

1. Installation dimensions: $\Phi 22\text{mm}$.
2. The shape of head: round ultra-thin surface
3. Function: signal, momentary button, maintained button, illuminated button
4. Optional contacts: 1NO1NC / 2NO2NC
5. IP degree: IP54

SWITCH RATING

Rated insulation voltage(U_i)		250V				
Thermal current(I_{th})		5A				
Rated voltage(U_e)		12V	24V	110V	220V	
Rated current (I_e)	AC-15 50/60Hz	Resistive load	5A	5A	5A	3A
		Inductive load	5A	5A	3A	2A
	DC-13	Resistive load	1A	1A	0.2A	0.1A
		Inductive load	0.7A	0.7A	0.1A	-
Contact Material		Silver alloy				

Minimum adaptive load: 3V AC/DC 5mA (reference value) (The scope of usage depends on the usage environment and load type)

SPECIFICATION

Operating temperature		-25°C~+55°C (Ice free)	
Operating humidity		45~85%RH	
Contact resistance		$\leq 30\text{m}\Omega$	
Insulation resistance		$\geq 100\text{M}\Omega$	
Dielectric strength	Between contact and lamp terminal	2000VAC/60s	
	Between terminal of the same pole	1500VAC/60s	
	Between terminal of the different pole	2000VAC/60s	
Solder heat resistance		230°C no more than 3s	
Operating travel		(push button) about 3mm	
Life	Mechanical life	Momentary	$\geq 1,000,000$ times
		Maintained	$\geq 500,000$ times
Electrical life		$\geq 100,000$ times	
Vibration resistance		50Hz, Amplitude 1.0mm	
Shock resistance		$> 10\text{g}$	
Terminal		Diameter of welded wire: $2 \times 0.8\text{mm}$ Area of copper wire max: $2 \times 0.8\text{mm}$ Connecting link: $2.8 \times 0.5\text{mm}$	

Soldering requirements: Finish soldering within 20W/5s or 230°C/3s. When soldering, soldering iron should not touch crust, and do not apply force on the terminal.

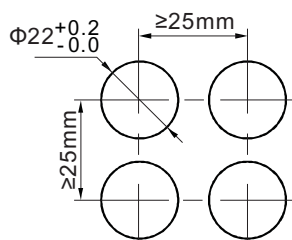
LAMP SPECIFICATIONS

Lamp type	Two-way LED lamp	
Rated voltage	AC/DC 3V	AC/DC 6V
	AC/DC 12V	AC/DC 24V
	AC/DC 36V	AC/DC 48V
	AC/DC 110V	AC/DC 220V
Lamp color	R ● G ● Y ● B ● W ○	
Life	$\geq 40000\text{h}$	

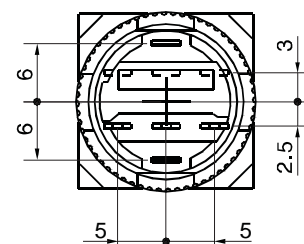
CONTACT DESCRIPTION

1NO1NC	Terminal arrangement
2NO2NC	Terminal arrangement

INSTALLATION DIMENSION



BOTTOM VIEW



Button Switch $\Phi 22$

Quality as the root · Service as the base



YJ-LA16W Series Ultrathin Surface Button Switch

PRODUCT SELECTION

Picture	Operation	Model	Shape Dimensions
	Signal lamp	YJ-LA16W-D/Y Δ ○	·If it is a customized symbol product, it is necessary to note the symbol or text in the model suffix
	Luminous power logo signal lamp	YJ-LA16W-P/Y Δ ○	
	Custom symbol signal lamp	YJ-LA16W-D/Y/FH Δ ○	
	Momentary	YJ-LA16W-○BN/Y○	·If it is a customized symbol product, it is necessary to note the symbol or text in the model suffix
	Maintained	YJ-LA16W-○BNZS/Y○	
	Luminous power logo, momentary	YJ-LA16W-○P/Y	
	Luminous power logo, maintained	YJ-LA16W-○ZP/Y	
	Custom symbol, momentary	YJ-LA16W-○BN/Y/FH	
	Custom symbol, maintained	YJ-LA16W-○BNZS/Y/FH	
	Illuminated, momentary	YJ-LA16W-○DN/Y Δ ○	
	Illuminated, maintained	YJ-LA16W-○DNZS/Y Δ ○	
	Luminous power logo, illuminated, momentary	YJ-LA16W-○DP/Y Δ ○	
	Luminous power logo, illuminated, maintained	YJ-LA16W-○DZP/Y Δ ○	
	Custom symbol, illuminated, momentary	YJ-LA16W-○DN/Y/FH Δ ○	
	Custom symbol, illuminated, maintained	YJ-LA16W-○DNZS/Y/FH Δ ○	