

Button Switch $\Phi 22$

Quality as the root · Service as the base



LA36A Series Of Metal Coil Button Switch

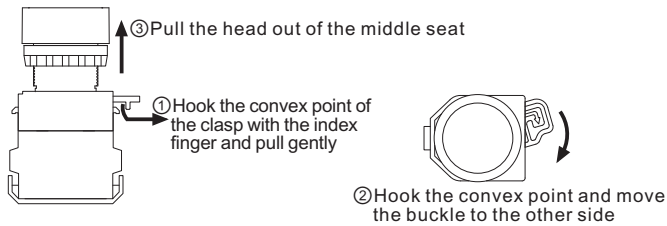


GENERAL

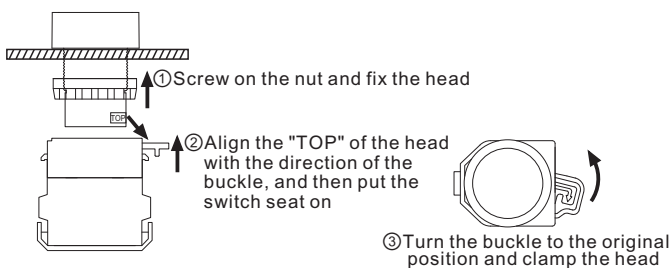
1. The head of this series product is metal coil, operating part and middle connection adopt convenient and quick installation way. It can be used under every terrible condition because of the lock, fall and vibration resistance.
2. The contact is a self-cleaning flat pressing quick action structure; The switch base can be assembled by building blocks, and can combine up to 8 switch elements according to requirements, which can meet the requirements of various specific control circuits.
3. Installation dimensions: $\Phi 22$ mm.
4. Function: momentary, maintained, illuminated button, selector switch, key-lock selector switch, emergency, mushroom.
5. Contact combination: 1NO1NC/2NO/2NC/1NO/1NC.
6. IP degree: IP40.

DISASSEMBLY AND INSTALLATION

1. Disassembly steps



2. Installation steps



LAMP SPECIFICATIONS

| Lamp type | Two-way LED lamp | | |
|---------------|---------------------|------------|------------|
| Rated voltage | AC/DC 6V | AC/DC 12V | AC/DC 24V |
| | AC/DC 36V | AC/DC 48V | AC/DC 110V |
| | AC/DC 220V | AC/DC 380V | |
| | AC 110V | AC 220V | AC 380V |
| Lamp color | R ● G ● Y ● B ● W ○ | | |
| Life | ≥40000h | | |

SPECIFICATION

| | | |
|-----------------------|--------------------------------------------------------------------------------|------------------|
| Operating temperature | -25°C~+55°C(Ice free) | |
| Operating humidity | 45~85%RH | |
| Contact resistance | ≤50mΩ | |
| Insulation resistance | ≥100MΩ | |
| Dielectric strength | 1890VAC/50Hz/60s | |
| Vibration resistance | 50Hz, Amplitude 1.0mm | |
| Shock resistance | > 10g | |
| Mechanical life | momentary | ≥2,000,000 times |
| | maintained, selector switch | ≥1,000,000 times |
| | key-lock selector switch, emergency | ≥500,000 times |
| Electrical life | ≥200,000 times | |
| Terminal | Screw connection, wire diameter: 2×1.5mm Largest insert terminal: 6.3×0.8mm | |

SWITCH RATING

| Rated insulation voltage(Ui) | | 660V | | | | | |
|------------------------------|------------------|----------------|-----|------|------|------|----|
| Thermal current(Ith) | | 10A | | | | | |
| Rated voltage(Ue) | | 24V | 48V | 110V | 220V | 380V | |
| Rated current (Ie) | AC-15 50/60Hz | Resistive load | 10A | - | 10A | 10A | - |
| | | Inductive load | 10A | - | 6A | 3A | 2A |
| | DC-13 | Resistive load | 8A | 4A | 2.2A | 1.1A | - |
| | | Inductive load | 6A | 2A | 1.2A | 0.6A | - |
| Contact Material | | Silver alloy | | | | | |

Minimum adaptive load: 3V AC/DC 5mA (reference value) | (The scope of usage depends on the usage environment and load type)

Button Switch $\Phi 22$

Quality as the root · Service as the base



LA36A Series Of Metal Coil Button Switch

CONTACT DESCRIPTION OF SWITCH BASE

The number of the black label on the switch base :

- The first digit "1" indicates the first pair of contacts on the first switch base, and "2" indicates the second pair of contacts on the first switch base.
- The second digit "1, 2" refers to two terminals of the NC contact, "3, 4" refers to two terminals of the NO contact point.

| Contact code | 11 | 20 | 02 | 10 | 01 |
|---------------|--------|-----|-----|-----|-----|
| Contact name | 1NO1NC | 2NO | 2NC | 1NO | 1NC |
| State diagram | | | | | |

WORKING POSITION AND CORRESPONDING CONTACT STATE OF SELECTOR SWITCH

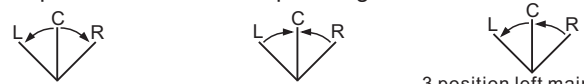
① Opening and closing state diagram of two positions and corresponding contacts



2 position maintained 2 position momentary

| S/N | Model | | |
|-----|-------------|--|--|
| 1 | LA36A-11■/2 | | |
| 2 | LA36A-20■/2 | | |
| 3 | LA36A-02■/2 | | |
| 4 | LA36A-22■/2 | | |
| 5 | LA36A-31■/2 | | |
| 6 | LA36A-13■/2 | | |
| 7 | LA36A-40■/2 | | |
| 8 | LA36A-04■/2 | | |

② Opening and closing state diagram of three positions and corresponding contacts



3 position maintained 3 position momentary 3 position left maintained right momentary

| S/N | Model | | | |
|-----|-------------|--|--|--|
| 1 | LA36A-11■/3 | | | |
| 2 | LA36A-20■/3 | | | |
| 3 | LA36A-02■/3 | | | |
| 4 | LA36A-22■/3 | | | |
| 5 | LA36A-31■/3 | | | |
| 6 | LA36A-13■/3 | | | |
| 7 | LA36A-40■/3 | | | |
| 8 | LA36A-04■/3 | | | |

IMPLICATION OF TYPE

| LA36A- | ⊙ | ■/ | □ | ▲ | △ | ○ |
|----------------|---------------------------------------------------------------------------------------------------------------------------------------|---------------------------------------------------------------------------------------------------------------------------------------------------------------------------------------------------------------------------------------------------------------------------------------------------------------------------------------------------------------------------------------------------------------------------|-------------------------------------------------------------------------------------------------------------------------------------------------------------|--------------------------------------------------------------------------------------|-----------------------------------------------------------------------------------------------------------------------------------------|-----------------------------------|
| Code of series | Contact : | Operating type: | Work position of selector switch: | Special requirements function: | Lamp voltage: | Color : |
| | 11: 1NO1NC 20: 2NO 02: 2NC 10: 1NO 01: 1NC 22: 2NO2NC 40: 4NO NO and NC contacts can be combined as required | BN:flat momentary BNZS:flat maintained DN:flat illuminated momentary DNZS:flat illuminated maintained GN: high momentary GNZS: high maintained M: mushroom momentary MZS: mushroom maintained MD:mushroom illuminated momentary MZSD:mushroom illuminated maintained X: selector switch XB:long handle selector switch XD: illuminated selector switch Y: key-lock selector switch | 21:2 position maintained 22:2 position momentary 31:3 position maintained 33:3 position momentary 32:3 position left maintained right momentary | No letters: convention FH:custom symbol K:anti-interference illuminated button | AC/DC 6V AC/DC 12V AC/DC 24V AC/DC 36V AC/DC 48V AC/DC 110V AC/DC 220V AC/DC 380V AC 110V AC 220V AC 380V | ■R ■G ■Y ■B □W ■BL |

Note: the above table is only for model explanation, and some model combinations have no actual products. See the following figure for specific products.

Button Switch $\Phi 22$

Quality as the root · Service as the base



LA36A Series Of Metal Coil Button Switch

PRODUCT SELECTION (The following models are conventional models. Please consult other models for special requirements)

| Picture | Operation | Model | Shape Dimensions |
|---------|---------------------------------|-----------------------------------|----------------------------------------------------------|
| | Flat momentary | LA36A-11BN \circ | |
| | Flat maintained | LA36A-11BNZS \circ | |
| | Flat illuminated momentary | LA36A-11DN \triangle \circ | |
| | Flat illuminated maintained | LA36A-11DNZS \triangle \circ | |
| | High momentary | LA36A-11GN \circ | |
| | High maintained | LA36A-11GNZS \circ | |
| | High illuminated momentary | LA36A-11GDN \triangle \circ | |
| | High illuminated maintained | LA36A-11GDNZS \triangle \circ | |
| | Mushroom momentary | LA36A-11M \circ | Selective Color \circ : R G Y |
| | Mushroom maintained | LA36A-11MZS \circ | |
| | Mushroom illuminated momentary | LA36A-11MD \triangle \circ | Selective Color \circ : R G Y |
| | Mushroom illuminated maintained | LA36A-11MZSD \triangle \circ | |

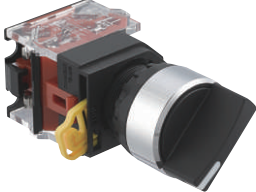
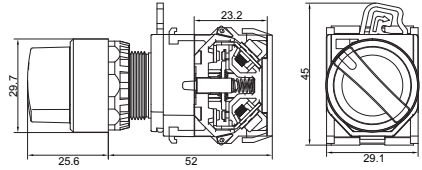
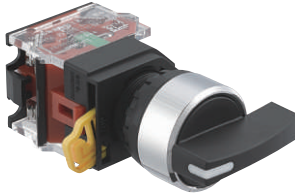
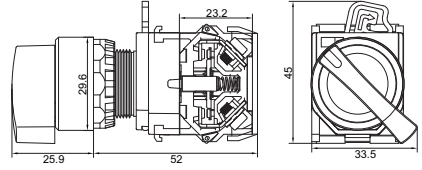
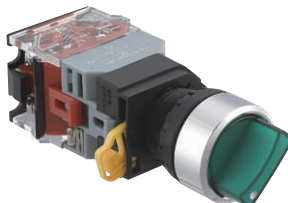
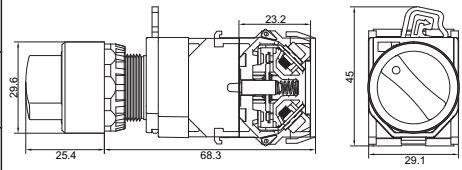
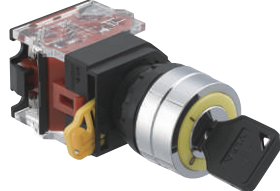
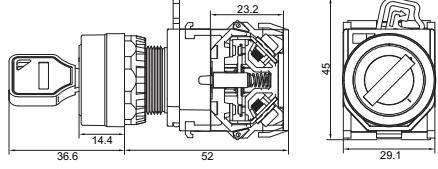
Button Switch $\Phi 22$

Quality as the root · Service as the base



LA36A Series Of Metal Coil Button Switch

PRODUCT SELECTION (The following models are conventional models. Please consult other models for special requirements)

| Picture | Operation | Model | Shape Dimensions |
|-------------------------------------------------------------------------------------|------------------------------------------------------------------------|-----------------------------------|--------------------------------------------------------------------------------------------------------------------------------------|
|  | 2 position maintained selector switch | LA36A-11X/21 | Default black, selective Color: R G Y  |
| | 2 position momentary selector switch | LA36A-11X/22 | |
| | 3 position maintained selector switch | LA36A-20X/31 | |
| | 3 position momentary selector switch | LA36A-20X/33 | |
| | 3 position left maintained right momentary selector switch | LA36A-20X/32 | |
|  | Long handle 2 position maintained selector switch | LA36A-11XB/21 | Default black, selective Color: R G Y  |
| | Long handle 2 position momentary selector switch | LA36A-11XB/22 | |
| | Long handle 3 position maintained selector switch | LA36A-20XB/31 | |
| | Long handle 3 position momentary selector switch | LA36A-20XB/33 | |
| | Long handle 3 position left maintained right momentary selector switch | LA36A-20XB/32 | |
|  | 2 position maintained illuminated selector switch | LA36A-11XD/21 Δ \bigcirc |  |
| | 2 position momentary illuminated selector switch | LA36A-11XD/22 Δ \bigcirc | |
| | 3 position maintained illuminated selector switch | LA36A-20XD/31 Δ \bigcirc | |
| | 3 position momentary illuminated selector switch | LA36A-20XD/33 Δ \bigcirc | |
| | 3 position left maintained right momentary illuminated selector switch | LA36A-20XD/32 Δ \bigcirc | |
|  | 2 position maintained key-lock selector switch | LA36A-11Y/21 |  |
| | 2 position momentary key-lock selector switch | LA36A-11Y/22 | |
| | 3 position maintained key-lock selector switch | LA36A-20Y/31 | |
| | 3 position momentary key-lock selector switch | LA36A-20Y/33 | |
| | 3 position left maintained right momentary key-lock selector switch | LA36A-20Y/32 | |